

FOI_1374_2023-24 – FOI Request Integrated Systems

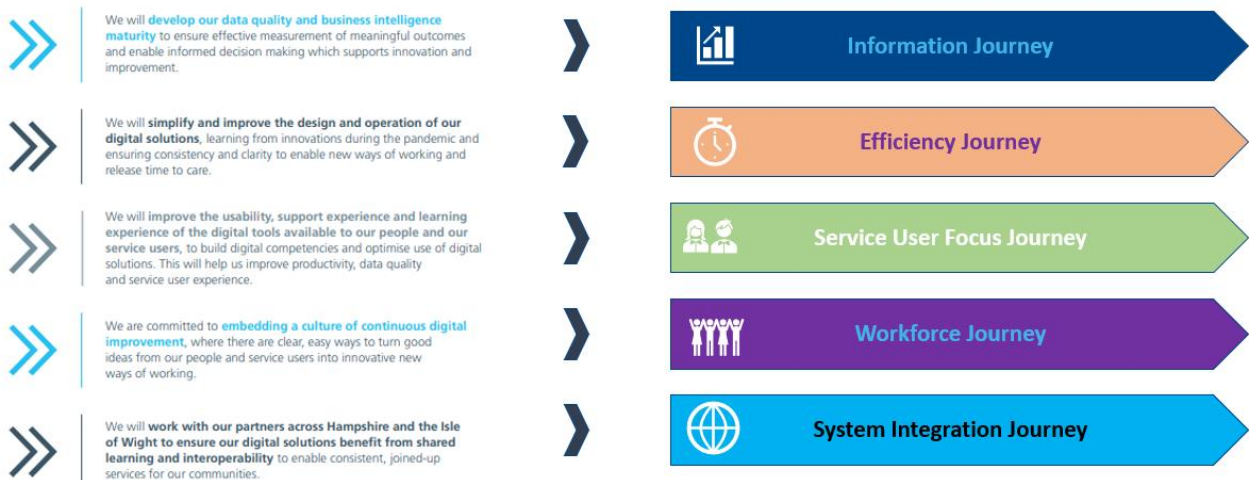
1. Name of the trust's EPR

TPP SystemOne
Inform
R4 Dental
IAPTus

2. Name of the trust's integration platform(s)

The Trust does not have an Integration Engine

3. What are the trust's digital priorities?



4. Do you have any plans for a clinical data repository/regional shared care record?

The HIOW ICB operates a regional shared care record.

5. If so, what is it called?

CHIE – Care and Health Information Exchange

6. If no, is this likely to happen?

N/A

7. Does the trust have any clinical systems which are unable to share data interoperable?

The Trust's main system is linked to CHIE

8. Does the trust use or is planning to use Artificial Intelligence for diagnostics?

No

9. Does the trust use or is planning to use Clinical Decision Support tools?

Our EPMA provides decision support on a basic level.

10. Does the trust have a Genomics data management strategy?

No

11. Does the trust have an Open EHR or other vendor-neutral interoperability strategy in place?

No

12. If not, is it likely the ICB will develop one?

Solent NHS Trust is unable to answer this question, as it should be addressed at the ICB